

Specifications

SCX-4321

SCX-4521F

	SCX-4321	SCX-4521F
Print		
Speed *	Up to 20 ppm in A4 (20 ppm in Letter)	
Resolution	600 x 600 dpi	
First Print Out Time	11 seconds (from Standby Mode)	
Emulation	SPL (Samsung Printer Language)	
Copy		
Speed **	Up to 20 ppm in A4 (20 ppm in Letter)	
Resolution (Optical)	600 x 600 dpi	
	Text, Text / Photo : 600 x 300 dpi	
	Photo mode : 600 x 600 dpi (Platen), 600 x 300 dpi (ADF)	
Resolution (Enhanced)	600 x 600 dpi	
First Copy Out Time	11 seconds (from Standby Mode)	
Zoom Rate	25~400% (Platen), 25~100% (ADF)	
Multi Copy	1~99 pages	
Scan		
Compatibility	Twain Standard, WIA Standard	
Method	Colour CIS	
Resolution (Optical)	600 x 600 dpi	
Resolution (Enhanced)	4800 x 4800 dpi	
Grey Scale	256 Levels	
Fax		
Compatibility	-	ITU-T Group 3, ECM
Applicable Line	-	Public Switched Telephone Network (PSTN) or behind PABX
Modem Speed	-	33.6 Kbps
Transmission Speed ***	-	Approx. 3 seconds per page
Compression Mode	-	MH / MR / MMR / JPEG
Scan Speed ****	-	Approx. 3 seconds per page
Resolution	-	Max. 300 x 300 dpi / Standard : 203 x 98 dpi / Fine : 203 x 196 dpi
	-	Super Fine : 300 x 300 dpi / Photo : 203 x 196 dpi / Colour : 200 x 200 dpi
Memory	-	2 MB (Approx. 160 pages at ITU-T #1 Chart)
Auto Dial	-	Up to 100 Locations
Paper Handling		
Input Capacity and Types	150-sheet Multi-purpose Tray (75 g/m ² , 20 lbs), 1-sheet Manual Tray	
Output Capacity and Types	50-sheet Face Down (75 g/m ² , 20 lbs)	
Media Size (for Print)	Legal, A4, Letter, Folio, Executive, JIS B5, A5, A6, Envelope 6 3/4, 7 3/4, #9, #10, DL, C5, C6, ISO B5, Monarch Env	
	76 x 127 mm (3" x 5") ~ 216 x 356 mm (8.5" x 14")	
Media Size (for Fax and Copy)	Letter, A4, Legal	
ADF Capacity	30 sheets (Letter / A4, 20 lb / 75 g/m ²)	
General		
Net Dimension (W x D x H)	438 x 374 x 368 mm (17.2" x 14.7" x 14.5")	
Weight with Consumables	10.4 Kg	
LCD	2 lines x 16 characters	
System Memory	16 MB	
Interface	USB 1.1 (Compatible with USB 2.0), IEEE 1284 Parallel	
OS Compatibility *****	Windows 98 / Me / NT4.0 / 2000 / XP	
	Various Linux OS (via USB interface only) including Red Hat 8.0~9.0,	
	Fedora Core 1~3, Mandrake 9.0~10.2, and SuSE 8.2~9.2 . Mac. 10.3	
Consumables		
Type	Single Cartridge	
Yield	3,000 pages at ISO 19752 5% Coverage (Ships with 1,000 pages Starter Toner Cartridge)	
Code	SCX-4521D3	
Options		
Network	Ethernet 10/100 Base TX (External) : ML-00ND	
	Ethernet 10/100 Base TX + 802.11b Wireless LAN (External) : ML-00LA	

* Print speed will be affected by Operating System used, computing performance, application software, connecting method, media type, media size and job complexity.

** Copy Speed is based on Single Document Multiple Copy.

*** Condition: Standard resolution, MMR (JBIG), Maximum modem speed, Phase "C" by ITU-T No.1 Chart, Memory Tx, ECM

**** Condition: ITU-T No.1 Chart, Standard Resolution

***** Please visit www.samsungprinter.com to download the latest software version.

Samsung SmartThru 4 Document management is provided for free of charge.

Distributed by

Design and Specifications are subject to change without notice.
Trademarks of other companies mentioned in these publications are hereby recognised and acknowledged.



Save Working Time and Effort with a Versatile Laser MFP

Samsung Laser MFP **SCX-4321/4521F**



Save Working Time and Effort with a Versatile Laser MFP SCX-4321/4521F

The new Samsung SCX-4321/4521F let you experience the best office environment. Featuring high performance with the fastest saving features, this powerful combination is the ideal work centre for your home office or small business.

Save Working Time

With exclusive copy functions, you can save yourself from the hassle of complex functions.

Favorite Copy

Store a few functions as "Favorite Copy." Instead of requiring multiple steps to select copy options, pressing the "Favorite Copy" button requires only one step to complete the assigned special copy. As fast as it gets.



ID Copy

This exclusive ID copying function allows you to consolidate copies without hassle or wasting time or paper.



Save Working

- Favorite Copy
- ID Copy

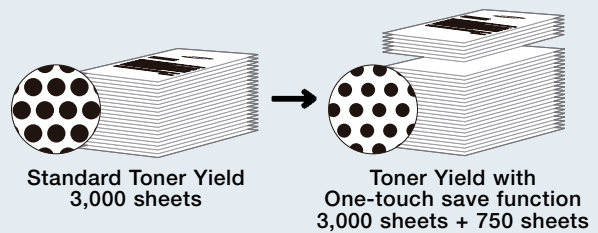
Save Working Cost

Toner Save Function



Toner Save Mode reduces toner consumption by up to 25%, giving you more print outs per toner cartridge.

This mode not only remains the print quality, but also saves papers for draft copies.

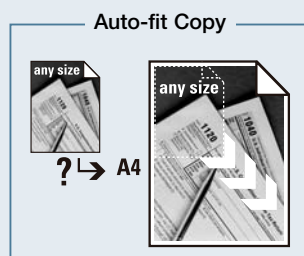


Save Working Space

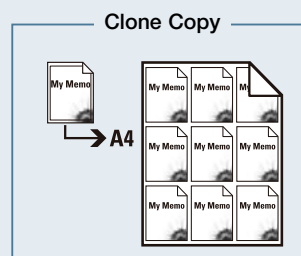
Don't clutter your desk with a printer, fax, scanner, and copier. Save money and working space in your office.

Print & Copy

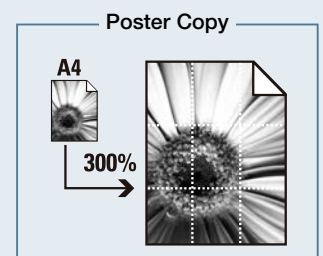
Incredible Speed up to 20 pages per min (A4) printing and copying.



A small image expanded to fit the printed page



The same image in reduced size on one printed page



One image can be enlarged up to 300% and printed in up to 9 perfectly aligned A4 pages

Save Working Space

- 20 pages per min (A4) Copying
- 20 pages per min (A4) Printing
- 33.6 Kbps Fax Modem Speed (SCX-4521F only)
- Up to 4800 dpi Colour Scan



SCX-4321

SCX-4521F

Save Working Cost

- Save up to 25% of Toner Consumption

Scan

Up to 4,800 dpi (via USB interface) lets you create digital copies of important papers and visual images.

SmarThru4™



SmarThru4™, document handling software will let you edit scanned images, save them in various formats, and set up copy/print formats - one click at a time.

OCR (Optical Character Recognition)

OCR software scans books and transforms them into editable rich text files.



Scan document



Scan

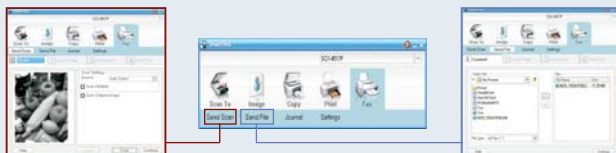


Save as editable text file

Fax (SCX-4521F only)

PC Fax

SCX-4521F sends a Fax document directly from your PC through SmarThru 4 software. You can just sit and watch everything being done. (send only)



Send Scan Images

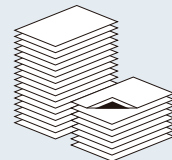
Send Files from PC

33.6 Kbps Modem Speed

2 MB Fax Memory equivalent to approximately 160 A4 pages.



2 MB



160 pages (A4)

10 One-touch Dial and 90 Speed Dial Functions

You can store up to 100 frequently dialed numbers in one or two digit speed dial location (0~99).