

# FUJITSU Image Scanner fi-6750S

Simplex scanning for the cost conscious user



- 72 ppm capable flatbed equipped scanner
- Comes bundled with PaperStream Capture image capture software
- Loaded with "intelligent" functions for more efficient scanning
- Ergonomic ADF

Visit the fi Series web site for ordering and purchasing information  
<http://imagescanner.fujitsu.com/>

A3

Color  
72  
ppm\*

Mono.  
72  
ppm\*

SIMPLEX

\*A4 Landscape 200/300 dpi

■fi-6750S Features

■72 ppm Scanning

The fi-6750S' ability to continuously scan up to 200 sheet of different weights, quality and sizes at 72 ppm\* (A4, landscape, 200 dpi) enables it to efficiently digitize large volumes of paper documents. On top of this, the fi-6750S is able to scan paper that is up to 3 m long, which enables it to digitize electrocardiograms, instrumental data readings and other long documents.

- \* Scanning speeds may vary due to the system environment used.
- System requirements (recommended)  
CPU: Intel® Core™ i5 2.5GHz or higher, Memory: 4GB or higher, HDD: 7,200rpm, Interface: USB3.0/2.0

■Loaded with “intelligent” functions for efficient operation

The fi-6750S is loaded with 2 high end fi Series functions that enable it to efficiently scan mixed batch documents containing paper of different weights, quality and sizes.

●Intelligent multifeed function

The intelligent multifeed function simplifies pre-scanning preparation and improves efficiency by ignoring documents that tend to trigger false multifeed alerts, such as photo and sticky note attached documents.

●Trapezoid-shaped and tab attached document cropping / punch hole removal functionality

In addition to being loaded with a function that ensures that trapezoid-shaped documents as well as index tab and sticky note attached documents are scanned in their entirety, the fi-6750S supports a function that removes the circular and angular punch hole representations that are created from scanning loose-leaf sheets, courier service forms and other similar documents.

■Renewed scanner driver and image capturing software

●PaperStream IP – produce high quality image processing

PaperStream IP is the scanner driver for fi Series which is based on TWAIN/ISIS standard. With the advanced black and white process, various documents can be automatically and easily converted into image data suitable for OCR (Optical character recognition). High quality image data can be created without pre-setting the scanning settings beforehand.

●PaperStream Capture – enhance batch scanning

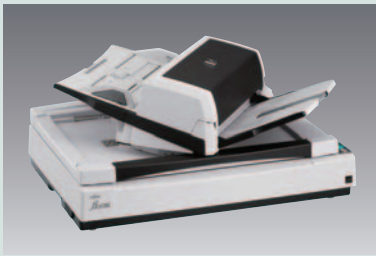
PaperStream Capture is an application to scan and manage the scanned data using fi Series scanners. Whether it is adjusting the scanning settings or performing batch scanning, you can complete the tasks easily with the user-friendly UI. With the seamless linkage with PaperStream IP, you can perform high quality image processing and batch scanning at the same time.

■Centralized management of multiple scanners

The bundled “Scanner Central Admin” application allows you to manage multiple scanners together. For example, you can update the scanner settings and drivers, as well as monitor the operating status of each scanner.

■Ergonomic ADF

- ADF positioning: 2 selectable positions (Center, Left)
- ADF direction: Selectable for left or right handed people when ADF is centrally positioned.



■Technical Specifications

Description			fi-6750S
Supported operating systems			Windows® 8 (32-bit/64-bit), Windows® 7 (32-bit/64-bit), Windows Vista® (32-bit/64-bit), Windows® XP (32-bit/64-bit), Windows Server® 2012, Windows Server® 2008 (32-bit/64-bit), Windows Server® 2003 (32-bit/64-bit)*1
Scanner type			ADF (Automatic Document Feeder) + Flatbed
Scanning modes			Simplex, Color / Grayscale / Monochrome
Image sensor type			Color CCD (Charge-coupled device) x 2 (front x 1, Flatbed x 1)
Light source			White cold cathode discharge lamp x 4 (front x 2, Flatbed x 2)
Document size	ADF		Maximum: A3 Portrait (297 x 420 mm or 11.7 x 16.5 in.), Double letter (279.4 x 431.8 mm or 11 x 17 in.) Minimum: A8 (52 x 74 mm or 2 x 3 in.)
	Flatbed		Maximum: 304.8 x 457.2 mm or 12 x 18 in.
Paper weight (Thickness)*2			A4/Letter size or smaller: 31 to 209 g/m <sup>2</sup> (8.3 to 55.6 lb) Over A4/Letter size: 52 to 209 g/m <sup>2</sup> (13.8 to 55.6 lb) A8 size: 127 to 209 g/m <sup>2</sup> (33.8 to 55.6 lb) Card feedability (ADF)*3
Scanning speed (A4 Landscape)*4	ADF	Color*5 Grayscale*5 Monochrome	Simplex: 72 ppm (200/300 dpi)
	Flatbed	Color / Grayscale / Monochrome	0.6 seconds (200 dpi) 0.7 seconds (300 dpi)
Scanning speed (A4 Portrait)*4	ADF	Color*5 Grayscale*5 Monochrome	Simplex: 55 ppm (200/300 dpi)
	Flatbed	Color / Grayscale / Monochrome	0.9 seconds (200 dpi) 1.1 seconds (300 dpi)
Paper chute capacity (A4 Landscape)*6			200 sheets (A4: 80 g/m <sup>2</sup> or 20 lb) (Active loadable ADF)
Expected daily volume			3,000 to 8,000 sheets/day
Background colors			ADF: White / Black (Selectable) Flatbed: White (Black background is optional.)
Optical resolution			600 dpi
Output resolution		Color (24-bit)	
		Grayscale (8-bit)	
		Monochrome (1-bit)	50 to 600 dpi (adjustable by 1 dpi increments), 1,200 dpi (driver)*7
Output format			Color: 24-bit Grayscale: 8-bit Monochrome: 1-bit
Internal video processing			1,024 levels (10-bit)
Interface			USB2.0/USB1.1
Connector shape			B type
Image processing functions			Auto color detection, Automatic page size detection, Automatic Orientation, Upper lower separation, Multi-image, Blank page skip, Error diffusion, Dither, Dropout color (R, G, B, None, White, Specified, Saturation), Image emphasis, Simplified DTC, Advanced DTC, iDTC, sRGB
Power requirements			AC 100 to 240 V ±10 %
Power consumption			Operating: 130 W or less Sleep mode: 3.0 W or less Auto Standby (OFF) mode: 0.5 W or less
Operating environment			Temperature: 5 to 35 °C (42 to 95 °F) Relative humidity: 20 to 80 % (Non-condensing)
Dimensions: Width x Depth x Height*8			690 x 500 x 342 mm (27.2 x 19.7 x 13.5 in.) Installation space: 1,030 x 700 x 640 mm (40.6 x 27.6 x 25.2 in.)
Weight			35 kg (77.2 lb)
Included software / drivers			PaperStream IP (TWAIN) driver, PaperStream IP (ISIS) driver, Software Operation Panel, Error Recovery Guide, PaperStream Capture, ScanSnap Manager for fi Series, Scanner Central Admin Agent
Environmental compliance			ENERGY STAR® and RoHS
Others	Multifeed detection		Yes (Standard) ultrasonic multifeed defection sensor
	Long page scanning*9		3,048 mm (120 in.)
Included items			ADF paper chute, Stackers, AC cable, USB cable, Setup DVD-ROM, Operator panel overlay

- \*1 PaperStream IP, PaperStream Capture do not support the following OS.
- \*2 There is no limit of paper weight when document is scanned with the Flatbed.
- \*3 The fi-6750S supports ISO 7810 card scannability, but cannot scan embossed cards.
- \*4 Actual scanning speeds are affected by data transmission and software processing times.
- \*5 JPEG compressed figures.
- \*6 Maximum capacity varies, depending upon paper weight.
- \*7 Scanning limitations brought about by scanning mode, document size and available memory may occur when scanning at high resolutions (600 dpi or higher).
- \*8 Excluding the ADF paper chute and stacker.
- \*9 The fi-6750S is capable of scanning the following documents that exceed A3 in length:  
- Documents not exceeding 863 mm (34 in.) in length at resolutions between 201 dpi and 400 dpi, and documents not exceeding 3,048 mm (120 in.) in length at resolutions between 50 dpi and 200 dpi with TWAIN and ISIS™. (Long paper scanning does not support resolutions that exceed 400 dpi.)

■Options

Description	Parts number	Comments
Black Document Pad (fi-575BK)	PA03338-D960	Black flatbed background pads which can be easily replaced by users.
2D Barcode for PaperStream	PA43404-A433	This option enables the scanner to recognize 2D Barcode. (PDF417, QR code)

■Consumables

Description	Parts number	Comments
Pick Roller	PA03338-K011	Lifetime: Every 250,000 sheets or one year These rollers feed documents into the scanner.
Brake Roller	PA03576-K010	Lifetime: Every 250,000 sheets or one year These rollers separate documents as they are being fed into the scanner.

■Trademarks

- \* ISIS is a registered trademark of EMC Corporation in the United States.
- \* Microsoft, Windows, Windows Server and Windows Vista are either registered trademarks or trademarks of Microsoft Corporation in the United States and/or other countries.
- \* Other company names and product names are the registered trademarks or trademarks of the respective companies.

⚠ Safety Precautions

- Be sure to carefully read all safety precautions prior to using this product and use this device as instructed.
- Do not place this device in wet, moist, steamy, dusty or oily areas. Using this product under such conditions may result in electrical shock, fire or damage to this product.
- Be sure to limit the use of this product to listed power ratings.



PFU Limited, a Fujitsu company, has determined that this product meets the ENERGY STAR® guidelines for energy efficiency. ENERGY STAR® is a registered trademark of the United States.