

FUJITSU Image Scanner fi-6770

High speed 90 ppm/180 ipm capable flatbed equipped scanner



- 90 ppm/180 ipm capable flatbed equipped scanner
- Loaded with "intelligent" functions for more efficient scanning
- Comes bundled with PaperStream Capture image capture software
- Ergonomic ADF

Visit the fi Series web site for ordering and purchasing information
<http://imagescanner.fujitsu.com/>

A3

Color
90
ppm*

Mono.
90
ppm*

DUPLEX

*A4 Landscape 200 dpi

fi-6770 Features

Speedy and flatbed equipped

The 90 ppm/180 ipm* capable (A4, landscape, 200 dpi) flatbed equipped fi-6770 is the fastest scanners in their class. Their ability to continuously scan 200 sheet mixed batch documents containing paper of different weights, quality and sizes enables both of these scanners to efficiently digitize large volumes of documents. On top of this, the fi-6770 is able to scan paper that is up to 3 m long, which enables them to digitize electrocardiograms, instrumental data readings and other long documents.

* Scanning speeds may vary due to the system environment used.

System requirements (recommended)

CPU: Intel® Core™ i5 2.5GHz or higher, Memory: 4GB or higher, HDD: 7,200rpm, Interface: USB3.0/2.0

Loaded with "intelligent" functions for efficient operation

The fi-6770 is loaded with 2 high end fi Series functions that enable it to efficiently scan mixed batch documents containing paper of different weights, quality and sizes.

Intelligent multifeed function

The intelligent multifeed function simplifies pre-scanning preparation and improves efficiency by ignoring documents that tend to trigger false multifeed alerts, such as photo and sticky note attached documents.

Trapezoid-shaped and tab attached document cropping / punch hole removal functionality

In addition to being loaded with a function that ensures that trapezoid-shaped documents as well as index tab and sticky note attached documents are scanned in their entirety, the fi-6770 supports a function that removes the circular and angular punch hole representations that are created from scanning loose-leaf sheets, courier service forms and other similar documents.

Renewed scanner driver and image capturing software

PaperStream IP – produce high quality image processing

PaperStream IP is the scanner driver for fi Series which is based on TWAIN/ISIS standard. With the advanced black and white process, various documents can be automatically and easily converted into image data suitable for OCR (Optical character recognition). High quality image data can be created without pre-setting the scanning settings beforehand.

PaperStream Capture – enhance batch scanning

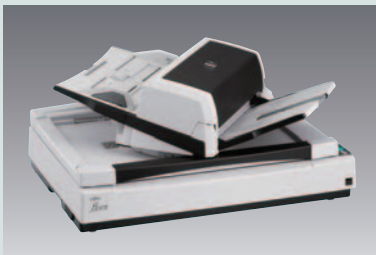
PaperStream Capture is an application to scan and manage the scanned data using fi Series scanners. Whether it is adjusting the scanning settings or performing batch scanning, you can complete the tasks easily with the user-friendly UI. With the seamless linkage with PaperStream IP, you can perform high quality image processing and batch scanning at the same time.

Centralized management of multiple scanners

The bundled "Scanner Central Admin" application allows you to manage multiple scanners together. For example, you can update the scanner settings and drivers, as well as monitor the operating status of each scanner.

Ergonomic ADF

- ADF positioning: 2 selectable positions (Center, Left)
- ADF direction: Selectable for left or right handed people when ADF is centrally positioned.



Technical Specifications

Description		fi-6770
Supported operating systems		Windows® 8 (32-bit/64-bit), Windows® 7 (32-bit/64-bit), Windows Vista® (32-bit/64-bit), Windows® XP (32-bit/64-bit), Windows Server® 2012, Windows Server® 2008 (32-bit/64-bit), Windows Server® 2003 (32-bit/64-bit)*1
Scanner type		ADF (Automatic Document Feeder) + Flatbed
Scanning modes		Simplex / Duplex, Color / Grayscale / Monochrome
Image sensor type		Color CCD (Charge-coupled device) x 3 (front x 1, back x 1, Flatbed x 1)
Light source		White cold cathode discharge lamp x 6 (front x 2, back x 2, Flatbed x 2)
Document size	ADF	Maximum: A3 Portrait (297 x 420 mm or 11.7 x 16.5 in.), Double letter (279.4 x 431.8 mm or 11 x 17 in.) Minimum: A8 (52 x 74 mm or 2 x 3 in.)
	Flatbed	Maximum: 304.8 x 457.2 mm or 12 x 18 in.
Paper weight (Thickness)*2		A4/Letter size or smaller: 0.04 to 0.25 mm (31 to 209 g/m ² , or 8.3 to 56.1 lb) Over A4/Letter size: 0.06 to 0.25 mm (52 to 209 g/m ² , or 13.8 to 56.1 lb) A8 size: 0.152 to 0.25 mm (127 to 209 g/m ² , or 33.8 to 56.1 lb) Card feedability (ADF)*3
Scanning speed (A4 Landscape)*4	ADF	Color*5 Grayscale*5 Monochrome
	Flatbed	Color / Grayscale / Monochrome
Scanning speed (A4 Portrait)*4	ADF	Color*5 Grayscale*5 Monochrome
	Flatbed	Color / Grayscale / Monochrome
Paper chute capacity (A4 Landscape)*6		200 sheets (A4: 80 g/m ² or 20 lb) (Active loadable ADF)
Expected daily volume		15,000 to 45,000 sheets/day
Background colors		ADF: White / Black (Selectable) Flatbed: White (Black background is optional.)
Optical resolution		600 dpi
Output resolution	Color (24-bit)	50 to 600 dpi (adjustable by 1 dpi increments), 1,200 dpi (driver)*7
	Grayscale (8-bit)	
	Monochrome (1-bit)	
Output format		Color: 24-bit Grayscale: 8-bit Monochrome: 1-bit
Internal video processing		1,024 levels (10-bit)
Interface*8,*9		Ultra SCSI, USB2.0/USB1.1 (Selectable)
Connector shape		Ultra SCSI: Shield type 50 pin (pin type), USB: B type
SCSI Terminator		Built-in
Image processing functions		Auto color detection, Automatic page size detection, De-Skew, Automatic Orientation, Upper lower separation, Multi-image, Blank page skip, Error diffusion, Dither, Dropout color (R, G, B, None, White, Specified, Saturation), Image emphasis, Simplified DTC, Advanced DTC, iDTC, sRGB
Power requirements		AC 100 to 240 V ± 10 %
Power consumption		Operating: 130 W or less Sleep mode: 3.0 W or less Auto Standby (OFF) mode: 0.5 W or less
Operating environment		Temperature: 5 to 35 °C (42 to 95 °F) Relative humidity: 20 to 80 % (Non-condensing)
Dimensions: Width x Depth x Height*10		690 x 500 x 342 mm (27.2 x 19.7 x 13.5 in.) Installation space: 1,030 x 700 x 640 mm (40.6 x 27.6 x 25.2 in.)
Weight		35 kg (77.2 lb)
Included software / drivers		PaperStream IP (TWAIN) driver, PaperStream IP (ISIS) driver, 2D Barcode for PaperStream, Software Operation Panel, Error Recovery Guide, PaperStream Capture, ScanSnap Manager for fi Series, Scanner Central Admin Agent
Environmental compliance		ENERGY STAR® and RoHS
Others	Multifeed detection	Yes (Standard) ultrasonic multifeed deflection sensor
	Long page scanning*11	3,048 mm (120 in.)
Included items		ADF paper chute, Stacker, AC cable, USB cable, Setup DVD-ROM, 2D Barcode for PaperStream Setup CD-ROM, Operator panel overlay

*1 PaperStream IP, PaperStream Capture do not support the following OS.

*2 There is no limit of paper weight when document is scanned with the Flatbed.

*3 The fi-6770 supports ISO 7810 card scannability, but cannot scan embossed cards.

*4 Actual scanning speeds are affected by data transmission and software processing times.

*5 JPEG compressed figures.

*6 Maximum capacity varies, depending upon paper weight.

*7 Scanning limitations brought about by scanning mode, document size and available memory may occur when scanning at high resolutions (600 dpi or higher).

*8 You cannot use both SCSI and USB2.0/1.1 interfaces at the same time.

*9 You cannot connect multiple computers to the scanner using each type of interface cables at the same time.

*10 Excluding the ADF paper chute and stacker.

*11 fi-6770 is capable of scanning the following documents that exceed A3 in length:

- Documents not exceeding 863 mm (34 in.) in length at resolutions between 201 dpi and 400 dpi, and documents not exceeding 3,048 mm (120 in.) in length at resolutions between 50 dpi and 200 dpi with TWAIN and ISIS™. (Long paper scanning does not support resolutions that exceed 400 dpi.)

Options

Description	Parts number	Comments
Black Document Pad (fi-575BK)	PA03338-D960	Black flatbed background pads which can be easily replaced by users.

Consumables

Description	Parts number	Comments
Pick Roller	PA03338-K011	Lifetime: Every 250,000 sheets or one year These rollers feed documents into the scanner.
Brake Roller	PA03576-K010	Lifetime: Every 250,000 sheets or one year These rollers separate documents as they are being fed into the scanner.

Trademarks

* ISIS is a registered trademark of EMC Corporation in the United States.

* Microsoft, Windows, Windows Server and Windows Vista are either registered trademarks or trademarks of Microsoft Corporation in the United States and/or other countries.

* Other company names and product names are the registered trademarks or trademarks of the respective companies.

⚠ Safety Precautions

- Be sure to carefully read all safety precautions prior to using this product and use this device as instructed.
- Do not place this device in wet, moist, steamy, dusty or oily areas. Using this product under such conditions may result in electrical shock, fire or damage to this product.
- Be sure to limit the use of this product to listed power ratings.



PFU Limited, a Fujitsu company, has determined that this product meets the ENERGY STAR® guidelines for energy efficiency. ENERGY STAR® is a registered trademark of the United States.